

VENICE

stylish, durable sun umbrella



SHADE7
premium outdoor living

THE VENICE SUN UMBRELLA IS THE PERFECT UMBRELLA FOR COMMERCIAL ENVIRONMENTS AND WINDY LOCATIONS.



What sets the Venice umbrella apart is the uniquely designed heavy duty 12mm fibreglass canopy arms. These fibreglass arms can bend and flex making the umbrella super durable and able to withstand wind and rough treatment. This sun umbrella also features strong resin and stainless steel parts and an easy to use rope and pulley system for opening and closing.

Our Venice Tilt umbrella has been specially fitted with a durable automatic tilt system, which allows you to tilt the canopy at a 60 degree angle. The winder does all the work for you, automatically tilting the umbrella into place and giving you flexible shade coverage to adjust for a low or high sun.



ADVANTAGES

- Lightweight and extremely durable fibreglass arms
- Strong 2.2mm thick aluminium post
- Venice - 5 year back-to-base frame warranty
- Venice Tilt - 3 year residential back-to-base frame warranty*
- European made acrylic canvas fabric with 10 year warranty*
- Heavy duty resin and stainless steel parts
- Post can be split into two halves for easy storage/transport
- Easy to open and close with rope and pulley system
- Rust free aluminium and fibreglass frame



5yr commercial back-to-base frame warranty



*No warranty for commercial use

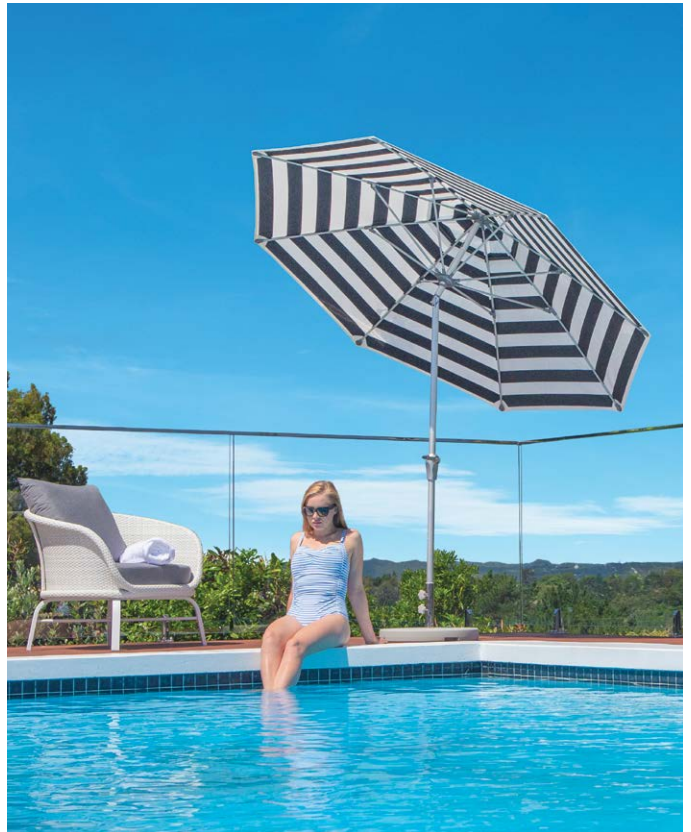


*5yr commercial fabric warranty

FEATURES

The Venice and Venice Tilt umbrellas are cleverly designed and engineered to be durable, long lasting and easy to operate. The fibreglass arms are extremely sturdy and are able to withstand very high wind conditions. Strong anodised aluminium centre posts are designed to be split in the middle to reduce the length for storage. Another benefit of these umbrellas is that while they are one of the strongest outdoor umbrellas on the market, they are also one of the lightest umbrellas. This makes them easy to carry when moved or stored.

BUILT WITH STRENGTH, STYLE AND FUNCTIONALITY; THE VENICE TILT SUN UMBRELLA CAN BE TILTED TO IMPROVE SHADE COVERAGE AS THE SUN MOVES ACROSS THE SKY



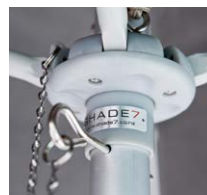
HEAVY DUTY ALUMINIUM SPLIT POLE



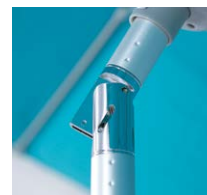
DURABLE STAINLESS STEEL PULLEYS & FIXINGS



SUPER STRONG FIBREGLASS ARMS & JOINTS



HIGH QUALITY ROPE & PIN OPENING SYSTEM



STRONG 60 DEGREE TILTING MECHANISM



DURABLE WINDER SYSTEM

VENICE TILT ONLY

ACCESSORIES



25KG CONCRETE BASE

A strong and durable concrete filled plastic base with aluminium spigot.



25KG PREMIUM WHEEL BASE

High quality wheel base made using galvanised steel with a stainless steel spigot.



40KG CONCRETE BASE (DOUBLE STACKED)

Includes the 25kg concrete filled plastic base with an extra 15kg weight upgrade for extra stability.



45KG PREMIUM WHEEL BASE (DOUBLE STACKED)

Includes the 25kg Premium Wheel Base with an extra 20kg plate for extra stability.



COVER BAG

Highly recommended and easy to use. Will double the life of your umbrella fabric.



INSTALLATION KIT

For installation onto a wooden deck or concrete patio.

You can use your umbrella with a freestanding base or install it using our stainless steel removable spigot system. The base plate is bolted down and the removable spigot is then fixed to the base plate.



CANOPY FABRIC

EUROPEAN MADE, 100% SOLUTION-DYED, ACRYLIC CANVAS.

Our premium marine-grade fabric comes with a 10 year warranty and has the best available colour fastness rating of 7-8 out of 8*. It also has the highest possible rating of UPF 80, cutting out the maximum amount of harmful UV light for excellent sun protection.

*Colours with red colour pigmentation (red, orange, yellow etc) will have lower colour fastness than other colours and will show some fading earlier.

VENICE RANGE

VENICE TILT

Dimensions

¹Measured from point to point. All measurements are rounded and are subject to change
²Wind damage is not covered by the warranty.
³When used at horizontal setting.

Dimensions of open umbrella

| | 2.2m Square | 2.6m Octagonal | 3.1m Octagonal |
|-----------------------------------|-------------|-------------------|-------------------|
| a: Width of canopy (cm) | 220 x 220 | 1260 [∅] | 1315 [∅] |
| b: Height to top of umbrella (cm) | 270 | 270 | 270 |
| c: Canopy edge height (cm) | 200 | 195 | 200 |
| Canopy shade area (m2) | 4.8 | 4.8 | 7.0 |

Dimensions of closed umbrella

| | 2.2m Square | 2.6m Octagonal | 3.1m Octagonal |
|---------------------------------|-------------|----------------|----------------|
| d: Closed ground clearance (cm) | 85 | 110 | 85 |
| Closes above tables? | Yes | Yes | Yes |

Wind rating guide

| | 2.2m Square | 2.6m Octagonal | 3.1m Octagonal |
|------------------------------------|-------------|----------------|----------------|
| Installed wind rating ² | 50kph | 80kph | 60kph |

2.6m Octagonal Tilt

| | |
|------------------------------------|--------------------|
| Canopy shade area (m2) | 4.8 |
| Height to top of umbrella (cm) | 270 |
| Canopy edge height (cm) | 195 |
| Closed ground clearance (cm) | 110 |
| Closes above tables? | Yes |
| Installed wind rating ² | ³ 40kph |

CANOPY COLOURS (Fabric colours may vary slightly from printed swatches shown)

STANDARD ACRYLIC COLOURS

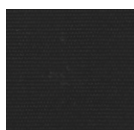


CHARCOAL R770

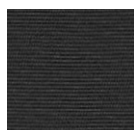


OFF WHITE R117

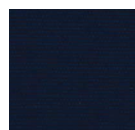
NON-STANDARD ACRYLIC COLOURS



BLACK R103



DARK GREY R164



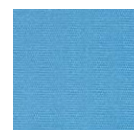
CAPTAIN NAVY R175



NAVY BLUE R170



ROYAL BLUE R172



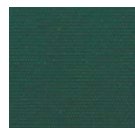
LIGHT BLUE R193



TURQUOISE R171



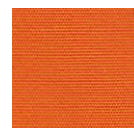
PISTACHIO R160



FOREST GREEN R102



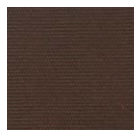
RED R176



ORANGE R567



YELLOW R554



BROWN R156



TAUPE R127



CADET GREY R138



LINEN R126



WHITE R099



BLACK/WHITE STRIPE R17